



# The Heritage & Arts Centre Bow

East London's Hidden Gem



The Heritage & Arts Centre at Holy Trinity Church Bow and Lichfield Hall  
020 8983 4416 • [info@thehac.org](mailto:info@thehac.org) • [thehac.org/hire-our-spaces](http://thehac.org/hire-our-spaces)



# Introducing East London's Hidden Gem

Welcome to The Heritage & Arts Centre at Holy Trinity Church Bow (The HAC Bow) and Lichfield Hall, situated just a matter of minutes from Mile End tube station. Both of our stunning spaces can be hired for community-focused, heritage and arts related events.

## About our work

Built around 1839-40, Holy Trinity Church is steeped in Victorian history. This stunning space is home to Epainos Ministries, an active church with members who are committed to the upkeep of the church and its grounds.

## Restoring Holy Trinity Church back to use

After closing its doors in 1984, Holy Trinity Church Bow lay dormant for many years, eventually earning a place on the Heritage at Risk Register as a Grade 2 listed property. Fortunately, donations from our local congregation, support from resident Architect Julian McIntosh, together with funding from the Heritage Lottery Fund, Historic Churches and English Heritage allowed for the first phase of much-needed restoration of Holy Trinity Bow Church. And with that, we renamed it The Heritage & Arts Centre Bow.





# Our Community Focused work

Not only do we hire out two fantastic spaces, we work with local artists and residents to create community generated art and heritage exhibitions some of which are featured during our annual Open House London event.

We support local resident's environment and conservation plans by building sustainable infrastructure into our Phase 2 restoration plans.

## PLEASE DONATE

Help us to continue our restoration of Holy Trinity Church in Bow to provide community access.

**NTCG Mile End Reserve**

**Account number: 81987587**

**Sort Code: 60-15-55**





# Host Your Dream Event at The Heritage & Arts Centre Bow

Nestled in the heart of East London's Mile End conservation area, The HAC Bow is an exquisite space which is available to hire 7 days a week, all year round, making it a flexible dry-hire venue for all events. Surrounded by a historical churchyard and just a short walk from Mile End tube station, The HAC Bow offers a blank canvas dry hire space with use of a fully equipped, accessible kitchen and off-street parking making it easy for your hospitality or furnishings contractors to access the main hall directly

Boasting a breathtaking cathedral space, The HAC Bow is perfect for Film & Video shoots, Branding Photography, Fashion Show, Wedding receptions, Proms, Engagement parties, Art exhibitions, Orchestra rehearsals, Choral Practice, Events promotions, Corporate meetings, Mehndi, Baby showers, Christenings, Baptisms, Funeral receptions and much more. This versatile space is ideal for larger celebrations but also those more intimate events.

Don't forget to check out our [Instagram page @TheHACBow](#) for a glimpse into Jacob & Bisi's white wedding as well as Ellie and Benjamin's grand wedding reception. Also look out for our confetti bombs and light shows photographs.





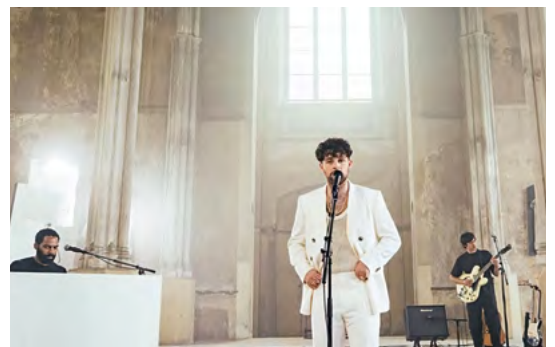
# The HAC Bow Ideal for Large or Intimate Events

This versatile space is ideal for larger celebrations but also those more intimate events. No matter how big or small you want to keep your wedding reception, this enchanting church space can be tailored to fit your dreams. You are only limited by your imagination!

## The Heritage & Arts Centre Bow (The HAC Bow)

### CAPACITY

Available to hire 7 days a week, all year round and seating up to 300 guests or 400 standing, The HAC Bow is a Dry hire venue priced at £200ph.





# Lichfield Hall

Litchfield Hall annexed in 1900, with its entrance from Litchfield Road, is an affordably priced, modern, fully furnished space which has regularly held wedding ceremonies, wedding receptions, school proms, birthday parties, Polling Station, Ward Meeting and Resident Associations meeting since 1998.

We have multiple smaller private hire rooms and onsite catering facilities. Speak to our booking team on **020 8983 4416** or **07508186172** about hiring our spaces.

## CAPACITY

Lichfield Hall is a wet hire space, fully equipped with an AV Assistant (contact us to discuss your audio visual needs) making it the ideal place to gather with family and friends for the celebration of a lifetime. This venue seats up to 150 guests or 200 standing and is affordably priced at £81ph.





# Frequently Asked Questions

Send an email to: [info@thehac.org](mailto:info@thehac.org) for a copy of our FAQ or join us for a 15 minute tour on any Tuesdays at 1pm but please book in advance via email.

There is a charge of £25 per person for a one hour private tour of the site which includes areas that are generally not open to the public. Book by sending a Whatsapp message with your contact details here: **07508186172**.

Talk to our Booking Team about our preferred list of Catering companies who have used our facilities.

**Get in touch with us today and start planning your dream event.**





# Contact Us

The Heritage & Arts Centre Bow  
Epainos Ministries, Lichfield Road  
London E3 5AT



[www.thehac.org](http://www.thehac.org)  
[info@thehac.org](mailto:info@thehac.org)  
07508186172  
02089834416

UK Registered Charity No. 250306.  
UK Company No. 917145

## Connect Via Social Media

Check out our social media platforms:

Instagram: @theHACbow

Twitter: @TheHACBow

Tripadvisor: @TheHACBow

Linkedin: @TheHACBow



## The Heritage & Arts Centre Bow (The HAC Bow)

Morgan Street, London, E3 5AA  
(entrance facing Rhondda Grove)

### CAPACITY

Available to hire 7 days a week, all year round and seating up to 300 guests or 400 standing, The HAC Bow is a Dry hire venue priced at £200ph.



## Lichfield Hall

Entrance via our car park on Lichfield Road, London, E3 5AT

### CAPACITY

Lichfield Hall is a wet hire space, fully equipped with an AV Assistant (contact us to discuss your audio visual needs) making it the ideal place to gather with family and friends for the celebration of a lifetime. This venue seats up to 150 guests or 200 standing and is affordably priced at £81ph